



G30A Series

The G30A is a 30mm planetary gearbox suitable for servo applications where DC Servo brush or BLDC motor technology is specified. The G30A provides maximum efficiency, minimum backlash, has a smaller mechanical footprint and is available with round and square mounting endbell configurations.

Compatible Motors: DC026C, DC030B, DC030C, DC040B, EC033A, EC044A, ES030A

■ Benefits

- Sintered metal gears for high torque capacity
- Sintered metal output bearing

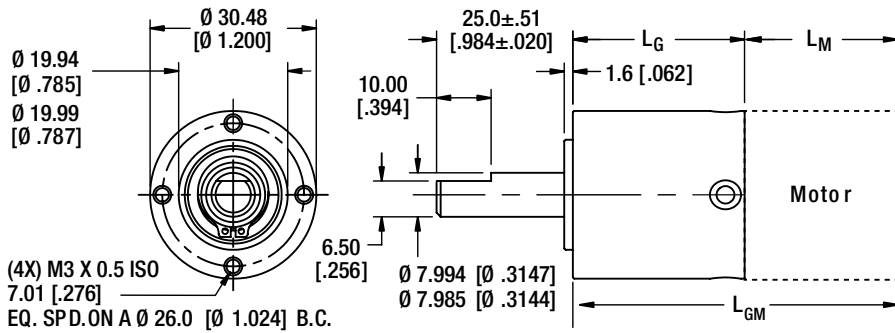
■ Characteristics

Gear Data	Units	G30A 4:1	G30A 6:1	G30A 16:1	G30A 24:1	G30A 36:1	G30A 64:1	G30A 96:1
Maximum Load	Nm	2.47	2.47	3.53	3.53	3.53	6.5	6.5
	oz-in	350	350	500	500	500	920	920
Weight (Mass)	g	110.6	110.6	124.7	124.7	124.7	138.9	138.9
	oz	3.9	3.9	4.4	4.4	4.4	4.9	4.9
Length (L)	mm	32.64	32.64	38.48	38.48	38.48	44.32	44.32
	inches	1.285	1.285	1.515	1.515	1.515	1.745	1.745
Stages	–	1	1	2	2	2	3	3
Ratio	–	4/1	6/1	16/1	24/1	36/1	64/1	96/1
Efficiency	–	0.90	0.90	0.81	0.81	0.81	0.73	0.73
Shaft Rotation	–	CW						

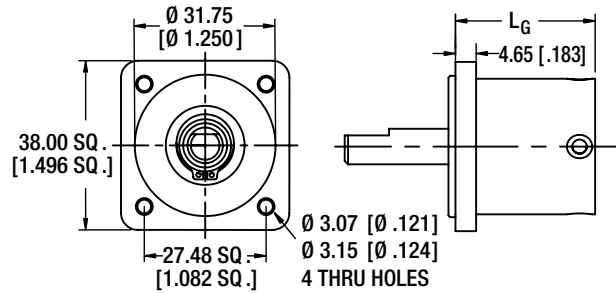
Gear Data	Units	G30A 144:1	G30A 216:1	G30A 256:1	G30A 384:1	G30A 576:1	G30A 864:1	G30A 1296:1
Maximum Load	Nm	6.5	6.5	8.83	8.83	8.83	8.83	8.83
	oz-in	920	920	1250	1250	1250	1250	1250
Weight (Mass)	g	138.9	138.9	155.9	155.9	155.9	155.9	155.9
	oz	4.9	4.9	5.5	5.5	5.5	5.5	5.5
Length (L)	mm	44.32	44.32	50.17	50.17	50.17	50.17	50.17
	inches	1.745	1.745	1.975	1.975	1.975	1.975	1.975
Stages	–	3	3	4	4	4	4	4
Ratio	–	144/1	216/1	256/1	384/1	576/1	864/1	1296/1
Efficiency	–	0.73	0.73	0.66	0.66	0.66	0.66	0.66
Shaft Rotation	–	CW						

Dimensional Drawings

Dimensions = mm [in]



With Optional Square Mounting Flange (G30AF)



■ Combined Length

Compatible Motors / Length (mm)				
Stage	1	2	3	4
DC026C-1	78.3	84.2	90.0	95.8
DC026C-2	81.5	87.3	93.2	99.0
DC026C-3	87.8	93.7	99.5	105.4

Compatible Motors / Length (mm)				
Stage	1	2	3	4
EC033A-1	70.7	76.6	82.4	88.3
EC033A-2	83.4	89.3	95.1	101.0
EC033A-3	96.1	102.0	107.8	113.7

Stage	1	2	3	4
DC030B-1	85.2	91.1	96.9	102.7
DC030B-2	88.4	94.2	100.1	105.9
DC030B-3	94.7	100.6	106.4	112.3

Stage	1	2	3	4
EC044A-1	84.9	90.8	96.6	102.5
EC044A-2	97.6	103.5	109.3	115.2
EC044A-3	110.3	116.2	122.0	127.9

Stage	1	2	3	4
DC030C-1	86.3	92.2	98.0	103.9
DC030C-2	98.3	104.1	110.0	115.8
DC030C-3	110.3	116.1	122.0	127.8

Stage	1	2	3	4
ES030A-1	91.6	97.5	103.3	109.2
ES030A-2	101.8	107.6	113.5	119.3

Stage	1	2	3	4
DC040B-1	79.1	84.9	90.8	96.6
DC040B-2	88.6	94.4	100.3	106.1
DC040B-3	93.7	99.5	105.4	111.2
DC040B-4	101.3	107.1	113.0	118.8
DC040B-5	110.2	116.0	121.9	127.7
DC040B-6	117.8	123.6	129.5	135.3